

# L TIMING PULLEYS

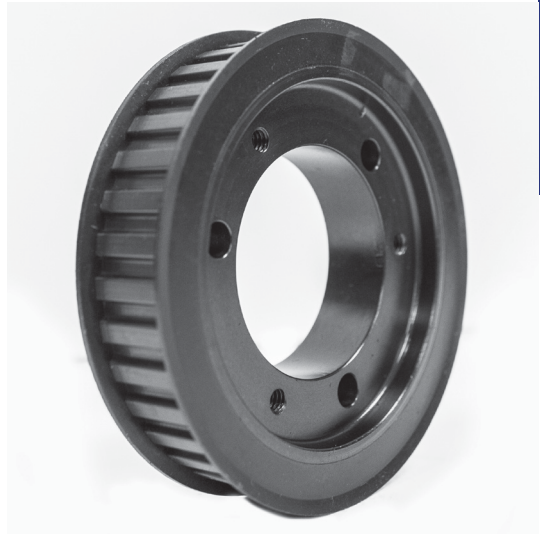
0.375" Trapezoidal Pitch

For 0.750" Wide Belts

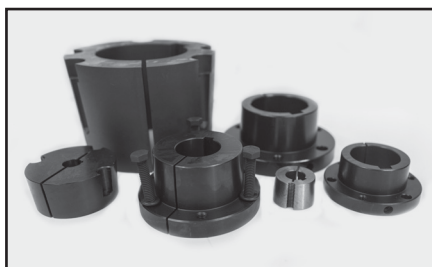
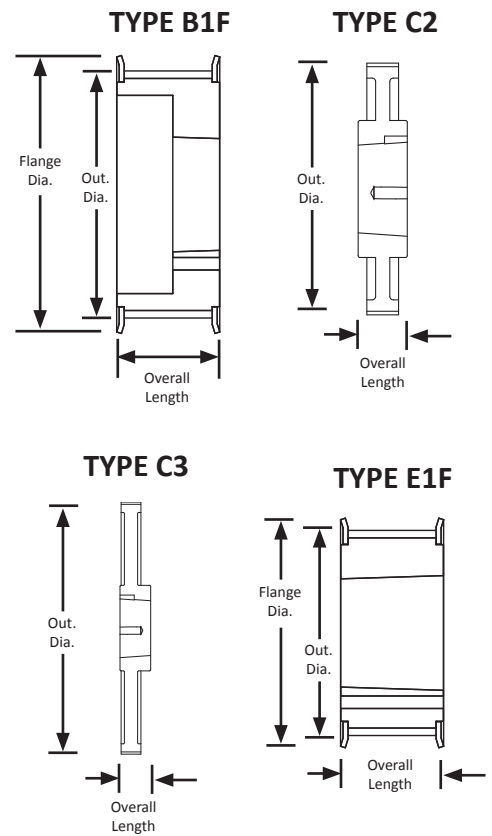
Iron

Black Oxide Plating

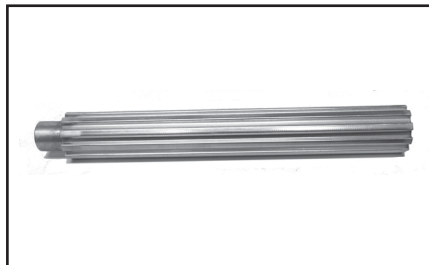
QD® Style



Part Number	No. of Teeth	Type	Pitch Dia. (in)	Out. Dia. (in)	Flange Dia. (in)	Bushing	Face Width (in)	Overall Length (in)
QD18L075	18	E1F	2.149	2.119	2.375	JA	1.000	1.000
QD20L075	20	E1F	2.387	2.357	2.625	JA	1.000	1.000
QD22L075	22	E1F	2.626	2.596	2.875	JA	1.000	1.000
QD24L075	24	E1F	2.865	2.835	3.094	SH	1.000	1.000
QD26L075	26	E1F	3.104	3.074	3.33	SH	1.000	1.000
QD28L075	28	E1F	3.342	3.312	3.566	SH	1.000	1.000
QD30L075	30	E1F	3.581	3.551	3.8	SDS	1.000	1.000
QD32L075	32	B1F	3.82	3.79	4.044	SDS	1.000	1.000
QD36L075	36	B1F	4.297	4.267	4.52	SDS	1.000	1.000
QD40L075	40	B1F	4.775	4.745	5.000	SDS	1.000	1.000
QD44L075	44	B1F	5.252	5.222	5.474	SDS	1.000	1.000
QD48L075	48	B1F	5.730	5.700	5.950	SDS	1.000	1.000
QD60L075	60	C2	7.162	7.132	-	SD	1.000	1.250
QD72L075	72	C3	8.594	8.564	-	SD	1.000	1.250
QD84L075	84	C3	10.027	9.997	-	SD	1.000	1.250
QD96L075	96	C3	11.459	11.429	-	SD	1.000	1.250
QD120L075	120	C3	14.324	14.294	-	SD	1.000	1.250



For matching QD® bushings, see page 372.



For L pitch pulley stock and flanges, see page 264.



For tensioners, see page 370.